



Fieldbus Foundation™
Freedom to Choose. Power to Integrate.

Electronic Device Description Language (EDDL)

Cooperation Team (ECT)



HART
COMMUNICATION FOUNDATION

PROFI
PROCESS FIELD BUS
BUS

OPC
FOUNDATION





EDDL Enhancements

Phase 1 - Completed 2006

- ✓ **Graphs – Graphical display of static Y-T and X-Y data**
- ✓ **Charts – Graphical display of real-time data from device**
- ✓ **Images – Embedded images**
- ✓ **Enhanced User Interface – Screen layouts**
- ✓ **Enhanced Data Storage- Securely store data on the host**

Phase 2 - Completed 2007

- ✓ **Complex Devices – Off line configuration, Access to Multiple Blocks**
- ✓ **Basic Client Applications – OPC Unified Architecture (OPC UA) Data Access**



EDDL Enhancements Examples

Graphs, Charts, Images, Screen Layouts Supported

Navigation

Image

Multi-pen Trend Chart

Gauge

Bargraph

Multiple Waveform Graph

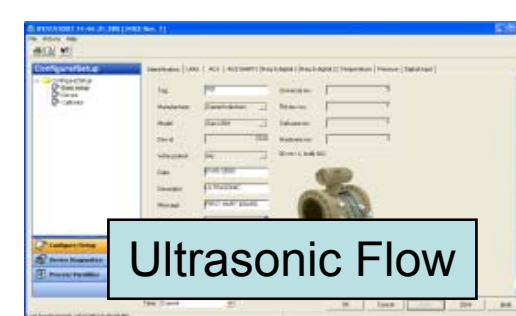
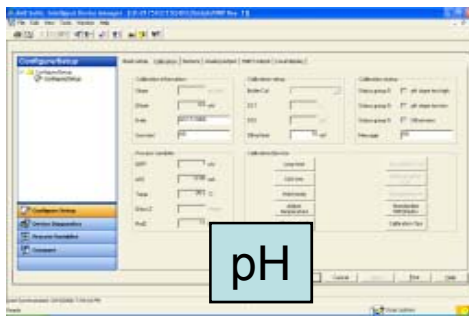
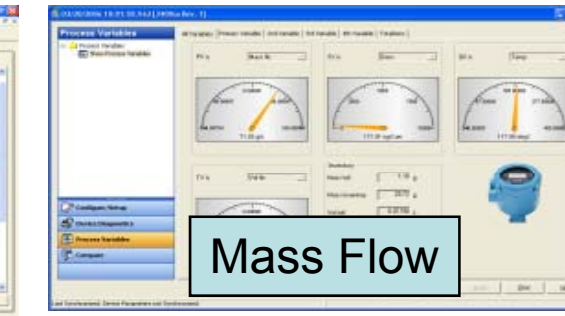
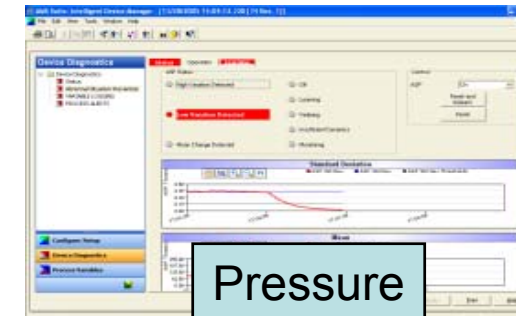
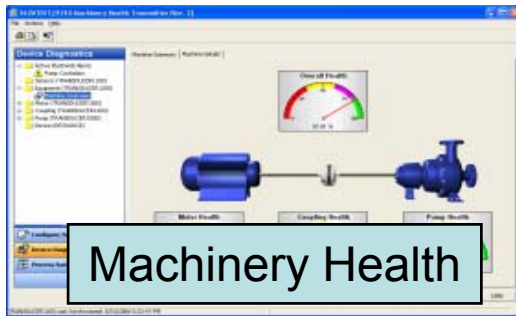
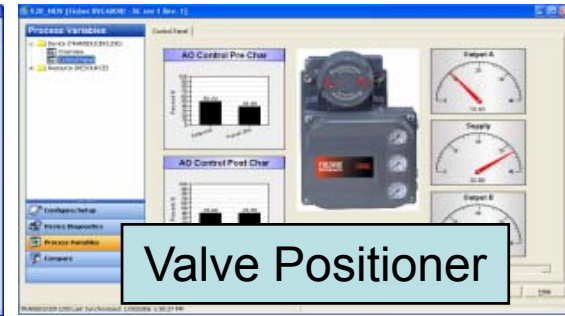
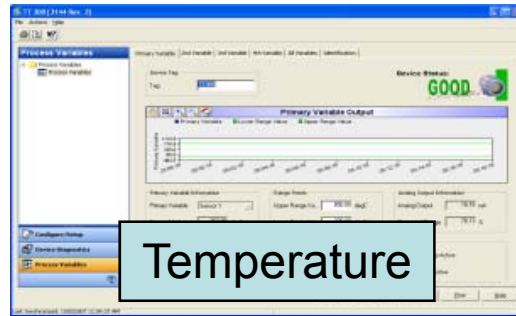
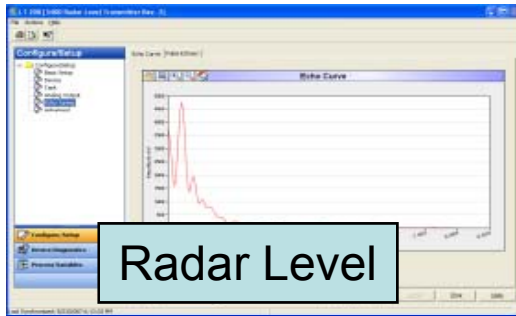
Histogram

Bar-chart



EDDL Enhancements Examples

All Device Types Supported – Full Functionality





Fieldbus Foundation™
Freedom to Choose. Power to Integrate.

Field Device Integration (FDI) Project

Single solution for integration of field devices into host systems

Combines strengths of EDDL and Device Type Manager (DTM)

Open specification that will be an international Standard

Technology direction agreed by major suppliers

Use cases agreed by major end users





FDI Project – General Requirements

- Host system independent
- Platform and operating system independent
- Provide access to the full capability of the field device
- Based on OPC UA client/server specifications and information model
- Support FOUNDATION™ fieldbus, HART®, PROFIBUS and PROFINET
- Adoptable to support other fieldbus communication technologies
- Specifications independently validated by the ECT organizations
- Provide backward compatibility with existing EDD's and DTM's
- Provide guidelines for field device and system developers
- Provide conformance tests to assure compliance



FDI Project Architecture

- **Advanced Client Applications – Configuration, Diagnostics, Maintenance**
- **Based on OPC Unified Architecture (OPC UA) Standard**

