

## Enterprise Level Interoperability

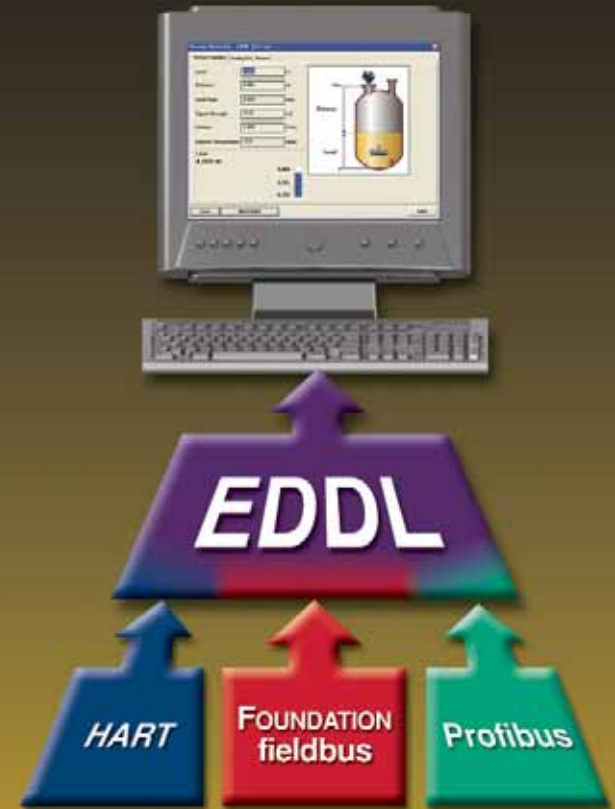
Further proof of the durability of the EDDL technology is the OPC Foundation's recent announcement that it will use EDDL in its new Unified Architecture (UA). The goal is to allow independent software applications to be transportable from host to host, as well as extend the use of OPC beyond the plant floor. EDDL will be used to describe the information that is exchanged across the OPC UA interface. The synergism between OPC UA and EDDL will enable the vision of delivering information from the plant floor to the top floor to become a reality.

With EDDL technology used by millions of installed field instruments, EDDL is the process industry international standard for ensuring that information about intelligent field devices is consistently available for use by operators, engineers, and maintenance technicians. And the beauty of it is, the EDD source file created for instrument number one works right alongside the EDD source file for instrument number 5 million, or 10 million, and so on – never once requiring an upgrade, revision, or patch of any kind.

EDDL was the right technology choice in 1992. It is the right choice today. And it is the right choice for tomorrow!



## EDDL The Key to Interoperability



## Real Device Interoperability

The promise of a truly interoperable environment – where fieldbus devices incorporating different protocols can seamlessly work together – has become a reality.

When the International Electrotechnical Commission (IEC) approved Electronic Device Description Language (EDDL) as international standard IEC 61804-2, files created using EDDL were already deployed in more than 15 million process industry field devices. Representatives of the Fieldbus Foundation (FF), HART Communication Foundation (HCF), and Profibus Nutzerorganisation e.V. (PNO) have now formed a cooperative project to add user-requested enhancements to these files, further improving interoperability.

EDDL is a text-based language for describing the digital communication characteristics of sophisticated field instrumentation and equipment parameters – such as device status, diagnostic data, and configuration details – in an operating system (OS) and user interface (UI) independent environment.

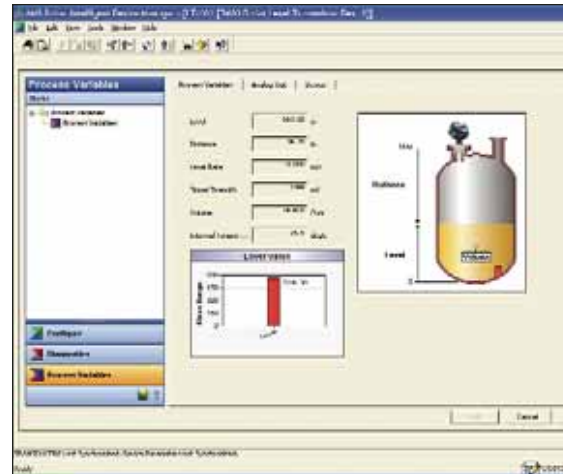
Today **EDDL** enables users to interact with their intelligent devices in new ways. Enhancements include:

- Improved data visualization and display capabilities, such as for waveforms and valve signatures
- A standardized method to access historic measurement or device performance information
- Enhanced tools for display and use of high-level information such as algorithmic relationships for complex device parameters.

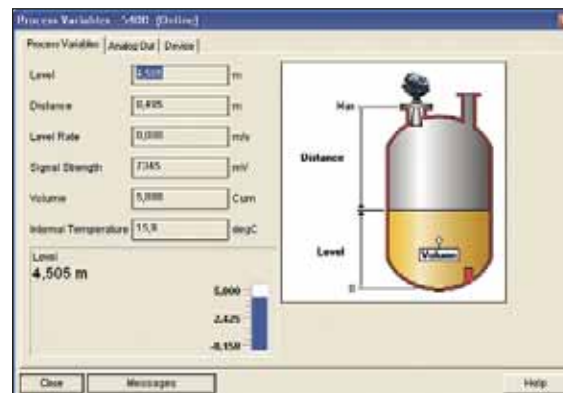
## User Interface Consistency

EDDL's graphical visualization enhancements take full advantage of the rich graphic capabilities of the host automation system.

As much as these capabilities benefit engineers and maintenance personnel by providing a consistent look and feel during device configuration and maintenance, they provide an even greater benefit to process operators during periods of abnormal operation when accurate and timely decision-making is paramount.

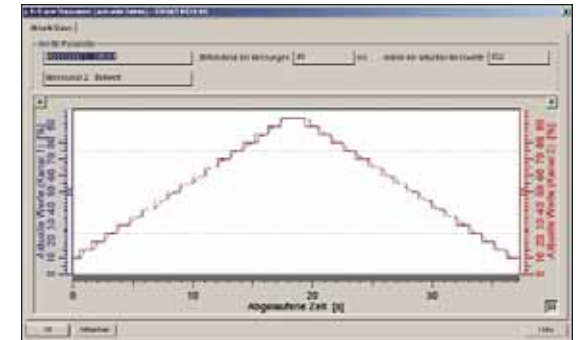


*Radar level gauge shown using new display capabilities while maintaining host look and feel.*



*Same radar level gauge display on different host.*

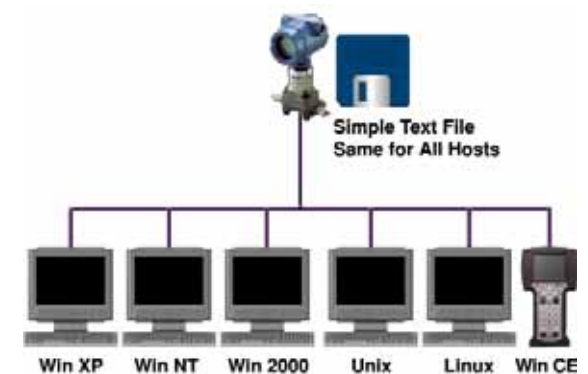
Persistent data storage enables users to store and retrieve snapshot data associated with sophisticated devices such as control valves, radar level gauges, and variable frequency drives.



*More complex data can be displayed, such as this Valve Step Response Graph.*

## Operating System Independence

EDDL is a descriptive technology, not executable code or drivers tied to a specific software platform. A simple text file contains all necessary information about what the device can do and what should be displayed. This text file can be read by any computer running any operating system.



*EDDL files can be read on any operating system.*